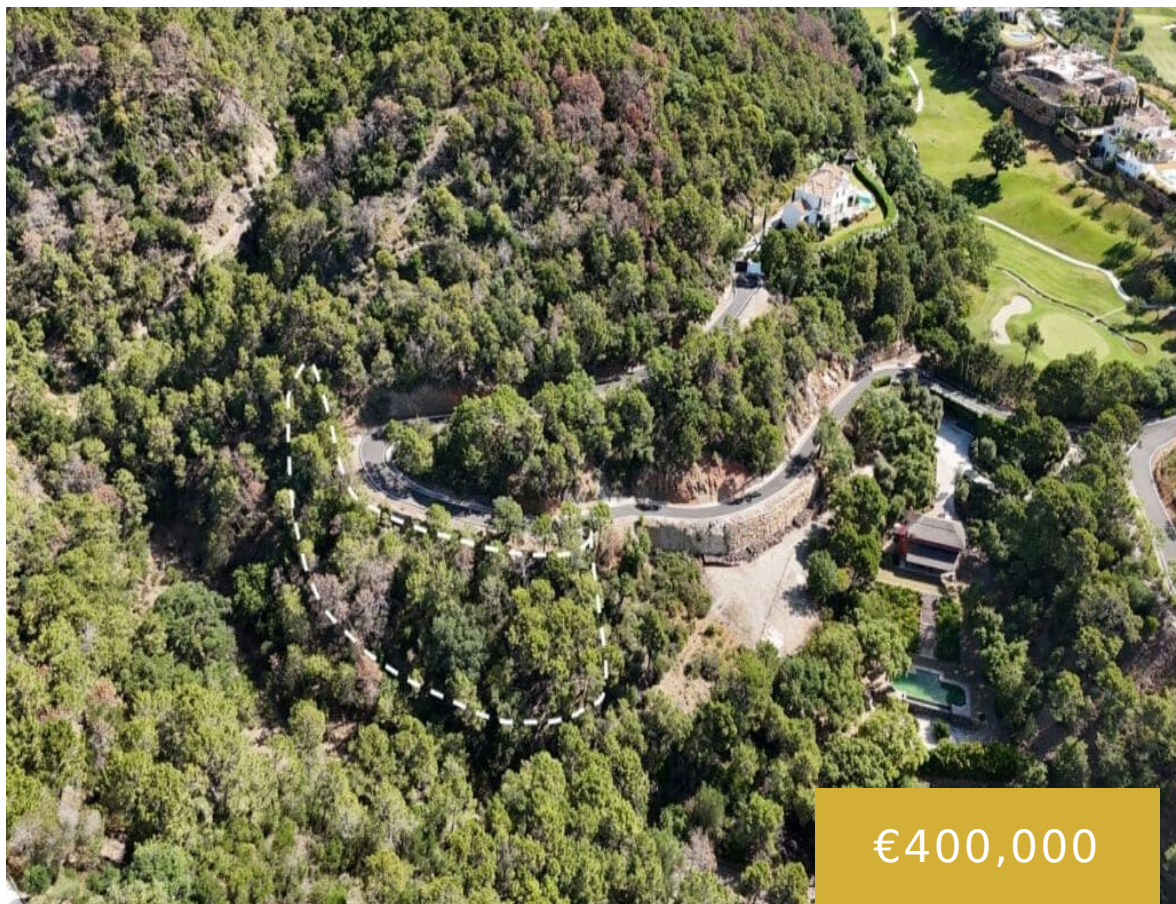


# MARBELLA CLUB GOLF RESORT

<https://benahavis.homes>



Plot for sale within the Marbella Club Golf Resort. This is a fully gated community, with camera surveillance circuit, internal barriers and 24-hour concierge-security. It also has an equestrian center, golf course and restaurant. The roads are wide, illuminated and monitored. This plot has 1986 m2 and a building allowance of 332 m2 in two levels, [...]

- 0 camas
- 0 baños
- Residential Plot
- 0 m<sup>2</sup>

## Basics

**Fecha Agregada :** Agregado hace 3 meses

**Dormitorios:** 0 camas

**Area, m<sup>2</sup>:** 0 m<sup>2</sup>

**Tipo:** Residential Plot

**Baños :** 0 baños

**Tamaño del lote:** 1986 m<sup>2</sup>

## Amenities & Features

### Call us now



Teléfono: +34 722 433 294  
Correo electrónico : [info@benahavis.homes](mailto:info@benahavis.homes)



BENAHAVIS HOMES

**Comodidades :** Equestrian Centre, Golf Course, Private Security, Restaurants

**Características:** 24 Hour Reception, 24 Hour Security, Bar, Close To Forest, Close To Golf, Close To Schools, Close To Town, Day Care, Frontline Golf, Gated Complex, Restaurant On Site, Stables, Suburban, Urbanisation

---

## Nearby Schools

**State Schools:**  
CEIP Daidín

**International Schools:** Atalaya International School, Aloha College, Calpe School, English International College, Swans International School, St Georges School

### Call us now



Teléfono: +34 722 433 294  
Correo electrónico : [info@benahavis.homes](mailto:info@benahavis.homes)



BENAHAVIS HOMES