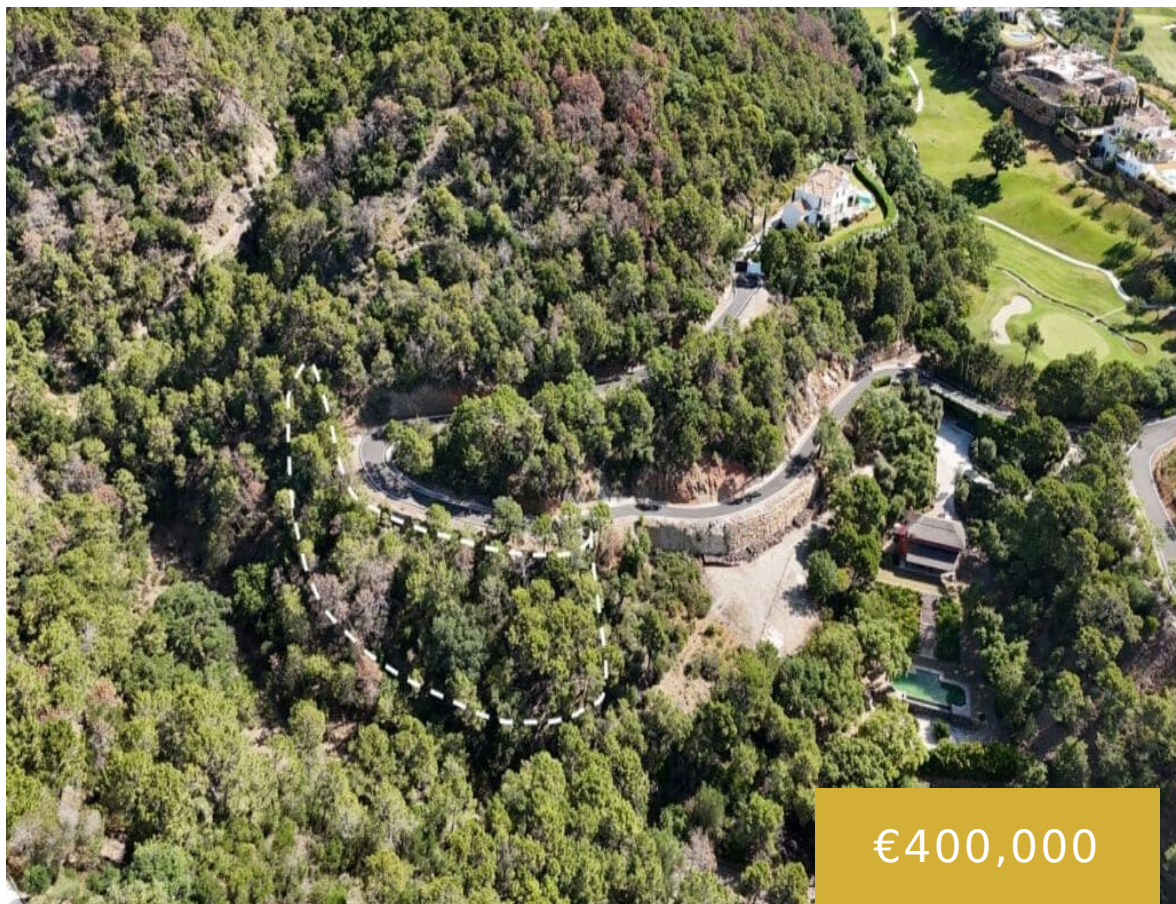


# MARBELLA CLUB GOLF RESORT

<https://benahavis.homes>



Plot for sale within the Marbella Club Golf Resort. This is a fully gated community, with camera surveillance circuit, internal barriers and 24-hour concierge-security. It also has an equestrian center, golf course and restaurant. The roads are wide, illuminated and monitored. This plot has 1986 m<sup>2</sup> and a building allowance of 332 m<sup>2</sup> in two levels, [...]

- 0 beds
- 0 baths
- Residential Plot
- 0 m<sup>2</sup>

## Basics

**Date added:** Added 3 months ago

**Bedrooms:** 0 beds

**Area, m<sup>2</sup>:** 0 m<sup>2</sup>

**Type:** Residential Plot

**Bathrooms:** 0 baths

**Lot size:** 1986 m<sup>2</sup>

## Amenities & Features

### Call us now



Phone: +34 722 433 294  
Email: [info@benahavis.homes](mailto:info@benahavis.homes)



**Amenities:** Equestrian Centre, Golf Course, Private Security, Restaurants

**Features:** 24 Hour Reception, 24 Hour Security, Bar, Close To Forest, Close To Golf, Close To Schools, Close To Town, Day Care, Frontline Golf, Gated Complex, Restaurant On Site, Stables, Suburban, Urbanisation

---

## Nearby Schools

**State Schools:**  
CEIP Daidín

**International Schools:** Atalaya International School, Aloha College, Calpe School, English International College, Swans International School, St Georges School



### Call us now

Phone: +34 722 433 294

Email: [info@benahavis.homes](mailto:info@benahavis.homes)



BENAHAVIS HOMES