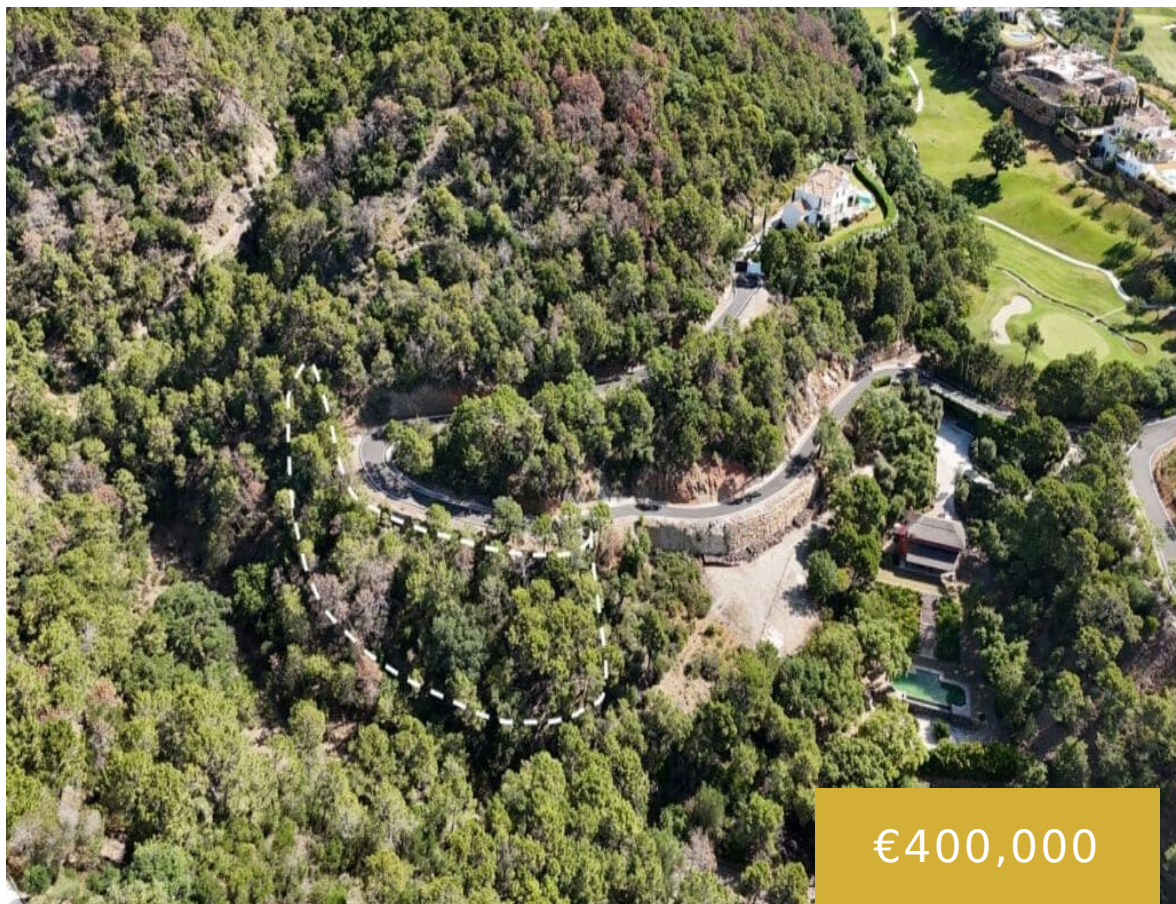


MARBELLA CLUB GOLF RESORT

<https://benahavis.homes>



Plot for sale within the Marbella Club Golf Resort. This is a fully gated community, with camera surveillance circuit, internal barriers and 24-hour concierge-security. It also has an equestrian center, golf course and restaurant. The roads are wide, illuminated and monitored. This plot has 1986 m² and a building allowance of 332 m² in two levels, [...]

- 0 beds
- 0 baths
- Residential Plot
- 0 m²

Basics

Date added: Added 2 months ago

Bedrooms: 0 beds

Area, m²: 0 m²

Type: Residential Plot

Bathrooms: 0 baths

Lot size: 1986 m²

Amenities & Features



Call us now

Phone: +34 722 433 294

Email: info@benahavis.homes



Amenities: Equestrian Centre, Golf Course, Private Security, Restaurants

Features: 24 Hour Reception, 24 Hour Security, Bar, Close To Forest, Close To Golf, Close To Schools, Close To Town, Day Care, Frontline Golf, Gated Complex, Restaurant On Site, Stables, Suburban, Urbanisation

Nearby Schools

State Schools:
CEIP Daidín

International Schools: Atalaya International School, Aloha College, Calpe School, English International College, Swans International School, St Georges School



Call us now

Phone: +34 722 433 294

Email: info@benahavis.homes



BENAHAVIS HOMES